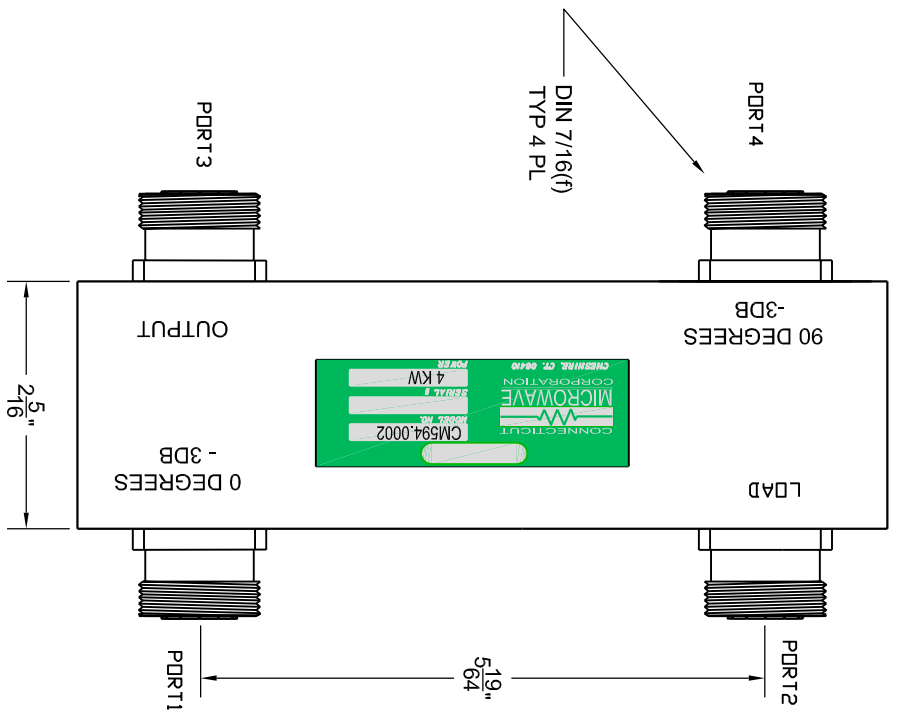
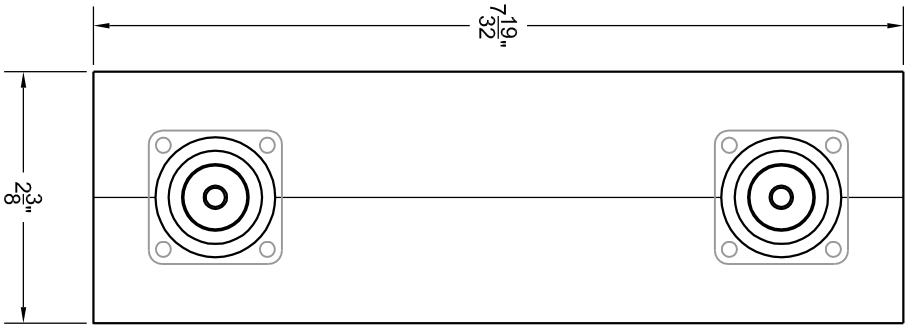


8 7 6 5 4 3 2 1

ELECTRICAL SPECIFICATIONS

| | |
|--|---------------|
| IMPEDANCE | 50 OHMS |
| VSWR: ALL PORTS | < 1.10 |
| OUTPUT POWER RATING | 4 KW AVERAGE |
| FREQUENCY RANGE | 475-950 MHz |
| MAXIMUM RESPONSE IMBALANCE FROM -3.01 dB | +/- 0.3dB |
| MAXIMUM PHASE IMBALANCE | +/- 2 DEGREES |
| INSERTION LOSS | < 0.1dB |
| CONNECTORS | 7/16 FEMALE |
| FINISH | IRIDIUM |



1. UNIT SEALED TO PREVENT ELECTRICAL LEAKAGE

| REV | LTR | DESCRIPTION | DATE | DT/ML | ENG |
|-----|-----|--------------------|---------|-------|-----|
| A | | NEW DWG | | | |
| B | | ADDED LEAKAGE NOTE | 8/17/07 | | |

CONNECTICUT MICROWAVE CORPORATION
 Connecticut Microwave Corp.
 1486 Highland Ave.
 Cheshire, Connecticut 06410

| DATE | BY | CHKD | APP'D | TITLE |
|---------|----|------|-------|-------------|
| 3/27/03 | RR | | | OUTLINE |
| | BH | | | 3 DB HYBRID |

DWG NO. **CM594.0002** REV. **B**

THIS DOCUMENT CONTAINS PROPRIETARY DATA OF THE CONNECTICUT MICROWAVE CORPORATION. NO DISCLOSURE, REPRODUCTION, OR USE OF ANY PART THEREOF MAY BE MADE EXCEPT BY WRITTEN PERMISSION.

ALL DIMENSION IN INCHES UNLESS OTHERWISE NOTED MUST COMPLY WITH WORKMANSHIP STANDARDS SPEC

TOLERANCES UNLESS NOTED
 .XX ± .01 .XXX ± .005
 ANGLES ± 1 DEG FRACT 1/164
 ALL V INDICATES 32 MICRONS

CONNECTICUT MICROWAVE CORPORATION
 1486 HIGHLAND AVE.
 CHESHIRE, CT 06410
 (860) 534-1100
 WWW.CONNECTICUTMICROWAVE.COM

CONNECTICUT MICROWAVE CORPORATION
 1486 HIGHLAND AVE.
 CHESHIRE, CT 06410
 (860) 534-1100
 WWW.CONNECTICUTMICROWAVE.COM

CONNECTICUT MICROWAVE CORPORATION
 1486 HIGHLAND AVE.
 CHESHIRE, CT 06410
 (860) 534-1100
 WWW.CONNECTICUTMICROWAVE.COM

CONNECTICUT MICROWAVE CORPORATION
 1486 HIGHLAND AVE.
 CHESHIRE, CT 06410
 (860) 534-1100
 WWW.CONNECTICUTMICROWAVE.COM

CONNECTICUT MICROWAVE CORPORATION
 1486 HIGHLAND AVE.
 CHESHIRE, CT 06410
 (860) 534-1100
 WWW.CONNECTICUTMICROWAVE.COM

CONNECTICUT MICROWAVE CORPORATION
 1486 HIGHLAND AVE.
 CHESHIRE, CT 06410
 (860) 534-1100
 WWW.CONNECTICUTMICROWAVE.COM